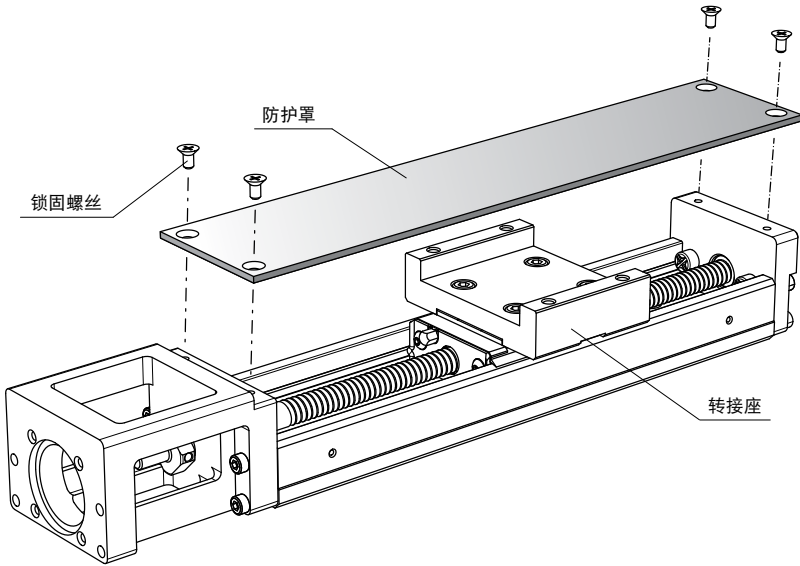


## J. 选购配件

### 防护罩

KM系列提供防护罩选用，并配备转接座，详细尺寸请参考各系列尺寸表。



### 伸缩护罩

KM系列提供伸缩护罩供客户选用，如有需求请与 *PMI* 联络。

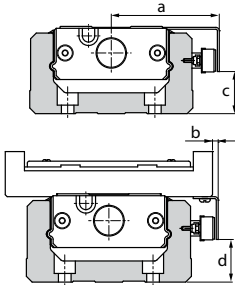
## 感应器

KM系列提供近接感应器与光电式感应器选用，下表为 *PMI* 所提供之感应器型号，如选用下列感应器，专用之感应器轨道与感应器板会附带其中，另也可单独选用感应器轨道。

标记	描述	型号	附件
0	无	-	-
1	感应器轨道	-	安装螺丝钉
2	光电式感应器(3个)	EE-SX671(Omron)	安装螺丝钉/螺帽、感应板、感应器轨道、安装板、连接器(EE-1001)
3	光电式感应器(3个)	EE-SX674(Omron)	安装螺丝钉/螺帽、感应板、感应器轨道、安装板、连接器(EE-1001)
4	近接感应器 a接触(3个)	GX-F12A(Panasonic)	安装螺丝钉/螺帽、感应板、感应器轨道
5	近接感应器 b接触(3个)	GX-F12B(Panasonic)	安装螺丝钉/螺帽、感应板、感应器轨道
A	近接感应器 a接触(1个)、b接触(2个)	GX-F12A(1个)、GX-F12B(2个)	安装螺丝钉/螺帽、感应板、感应器轨道

感应器安装之相对尺寸如下所示：

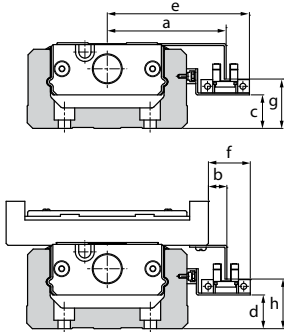
Panasonic GX-F12A、GX-F12B



型号	a	b	c	d
KM 20	34.2	8.2	3.5	3.5
KM 26	38.9	7.9	6.2	6.2
KM 30	44	4	8.2	8.2
KM 33	44	1	9.2	10
KM 45	54.0	2.0	13.2	13
KM 46	57.0	1.0	22.2	23
KM 55	64	2	21.2	22.7
KM 65	79.0	-6.0	23.3	23.3

单位：mm

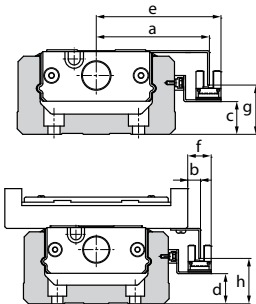
Omron EE-SX671



型号	a	b	c	d	e	f	g	h
KM 20	41	15	1.5	1.5	53.5	27.5	8	8
KM 26	46.0	15.0	2.0	2.0	58.5	27.5	10.5	10.5
KM 30	50.9	10.9	3.8	3.8	63.4	23.4	12.8	14
KM 33	50.9	7.9	5.0	5.0	63.4	20.4	13.8	15
KM 45	60.5	8.9	8.8	8.8	73.4	21.4	17.7	19
KM 46	63.9	7.9	18.0	18.0	76.4	20.4	26.5	28
KM 55	72	8.8	17.0	17.0	83.3	21.3	25.5	27
KM 65	85.8	0.8	19.0	19.0	98.3	13.3	27.7	27.7

单位：mm

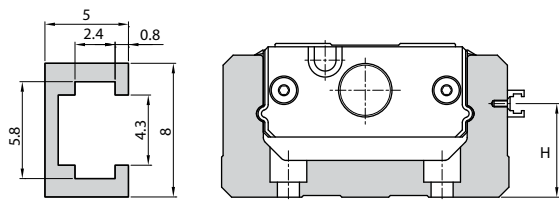
Omron EE-SX674



型号	a	b	c	d	e	f	g	h
KM 20	38.7	12.7	1.3	1.3	45	19	8.5	8.5
KM 26	43.7	12.7	1.8	1.8	50.0	19.0	10.8	10.8
KM 30	48.6	8.6	3.6	3.6	54.9	14.9	12.8	12.6
KM 33	48.6	5.6	4.8	4.8	54.9	11.9	13.8	14
KM 45	58.6	6.6	8.8	8.8	64.9	12.9	18.2	19.3
KM 46	61.6	5.6	17.8	17.8	67.9	11.9	26.8	28.1
KM 55	68.5	6.9	16.8	16.8	74.8	12.8	26.8	27.5
KM 65	83.5	-1.5	19.0	19.0	89.8	4.8	28.3	28.3

单位：mm

感应器轨道之尺寸如下所示：



型号	H
KM 20	9.5
KM 26	12
KM 30	14
KM 33	15
KM 45	19
KM 46	28
KM 55	27
KM 65	30

### 马达连接法兰

KM系列提供安装不同马达之马达连接法兰，下表为连接不同马达时所需选用之连接法兰编号，请于订购时参考使用。

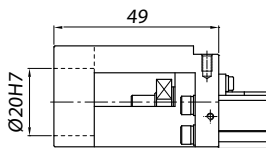
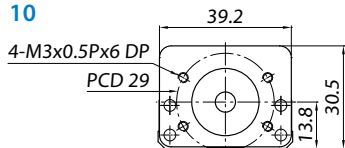
单位：mm

马达厂牌	型号	KM 20	KM 26	KM 30	KM 33	KM 45	KM 46	KM 55	KM 65
安川伺服马达	SGMAH-A3(30W)	1A	2A	3A	3A	4A	4A		
	SGMAH-A5(50W)	1A	2A	3A	3A	4A	4A		
	SGMAH-01(100W)			3A	3A	4A	4A		
	SGMPH-01(100W)					40	40	50	6C
	SGMAH-02(200W)					40	40	50	6C
	SGMAH-04(400W)					40	40	50	6C
	SGMPH-02(200W)							5C	60
	SGMPH-04(400W)							5C	60
	SGMAH-08(750W)							5C	6G
三菱伺服马达	HC-MFS053(50W)	1A	2A	3A	3A	4A	4A		
	HC-MFS13(100W)			3A	3A	4A	4A		
	HC-MFS23(200W)					40	40	50	6C
	HC-KFS23(200W)					40	40	50	6C
	HC-MFS43(400W)					40	40	50	6C
	HC-KFS43(400W)					40	40	50	6C
	HC-MFS73(750W)							5C	6G
	HC-KFS73(750W)							5C	6G
松下伺服马达	MSMD5A(50W)	1D	2D	3D	3D	4D	4D		
	MSMD01(100W)			3D	3D	4D	4D		
	MSMD02(200W)						40		
	MSMD04(400W)						40		
	MSMD08(750W)							5F	6F
Fastech 步进马达	EzM-28	1G	2G						
	EzM-42	1H	2H	3H	3H	4H	4H		
	EzM-56			3I	3I	4I	4I		
	EzM-60			3J	3J	4J	4J		
东方步进马达	PK22	1G	2G						
	PK24	1H	2H	3H	3H	4H	4H		
	PK26(标准)			3I	3I	4I	4I		
	RK54	1H	2H	3H	3H	4H	4H		
	RK56			3J	3J	4J	4J		
	RK59							5K	6K

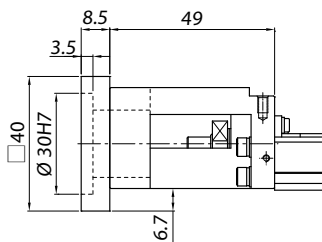
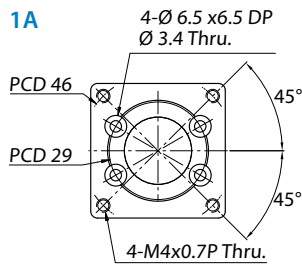
马达连接法兰尺寸如下所示：

KM20

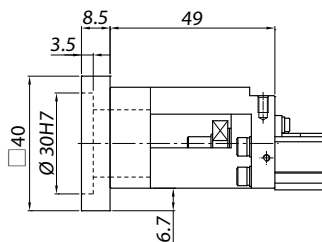
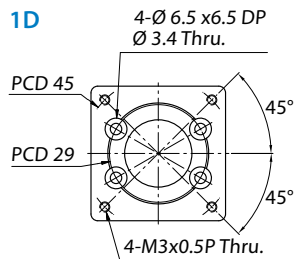
**10**



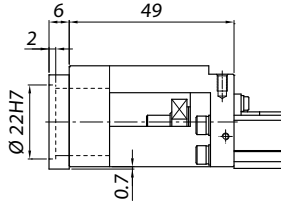
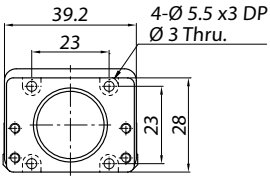
**1A**



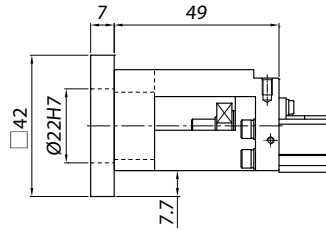
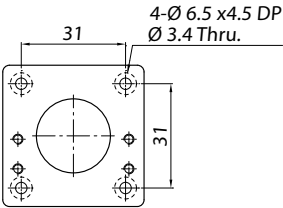
**1D**



1G

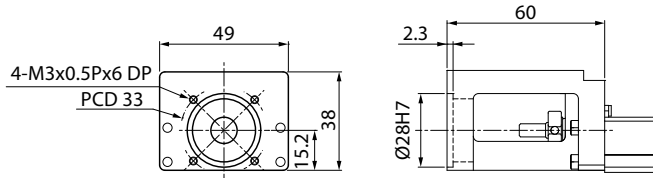


1H

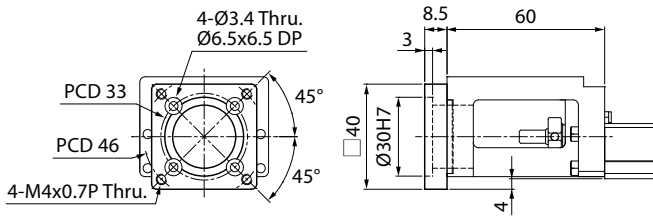


KM26

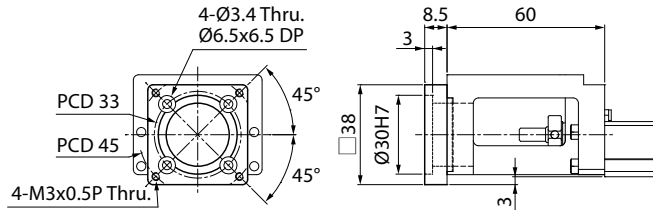
20



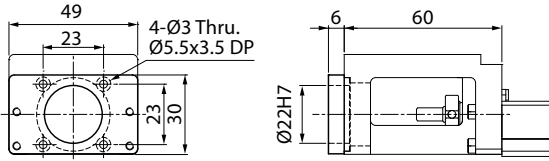
2A



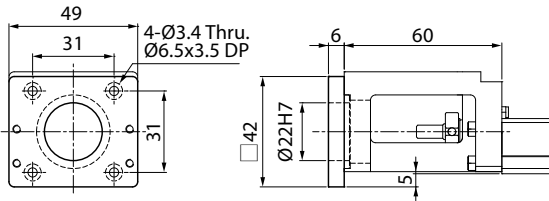
2D



2G



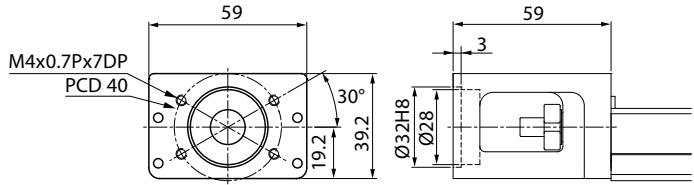
2H



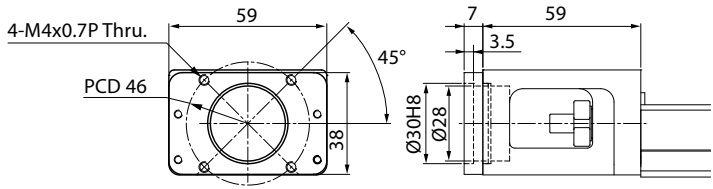


KM30

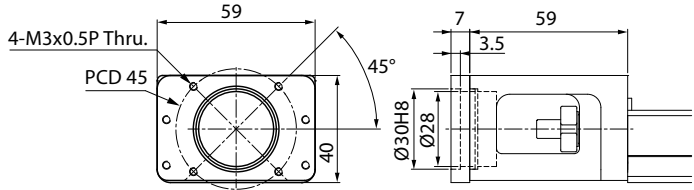
30



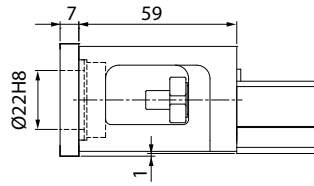
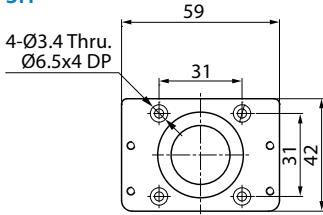
3A



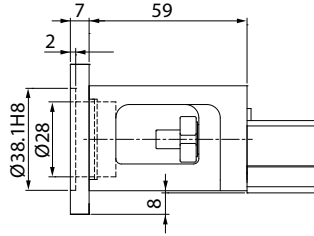
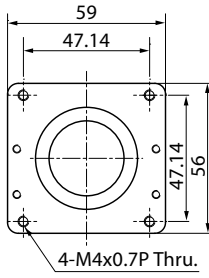
3D



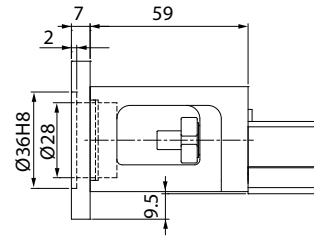
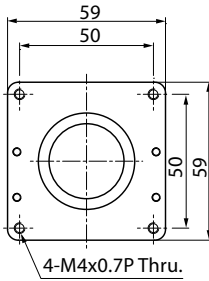
3H



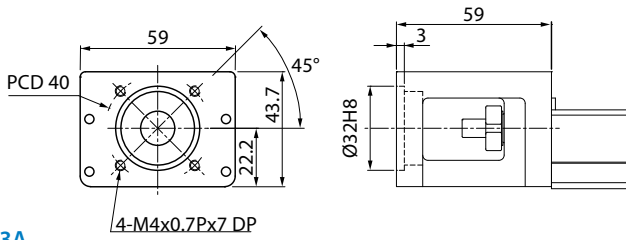
3I



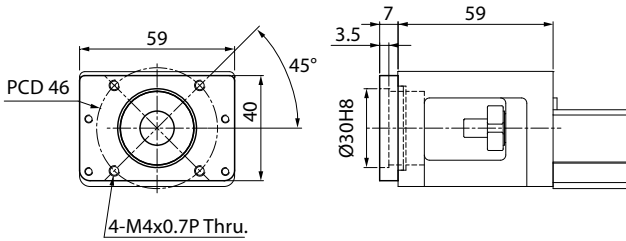
3J



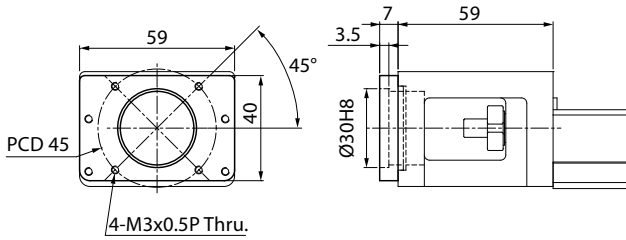
30



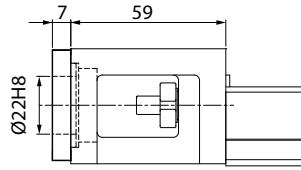
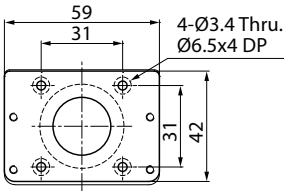
3A



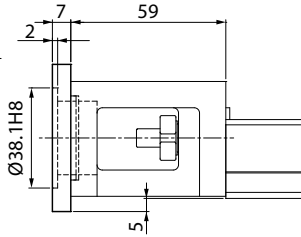
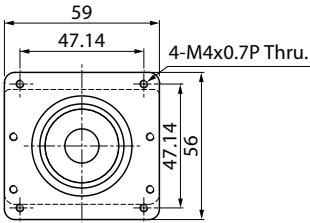
3D



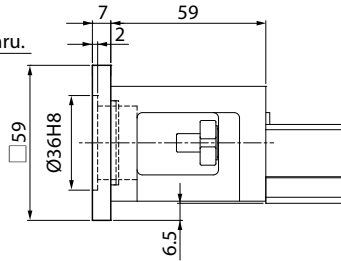
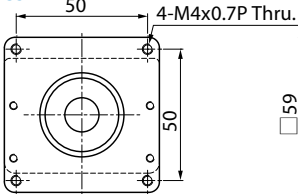
3H



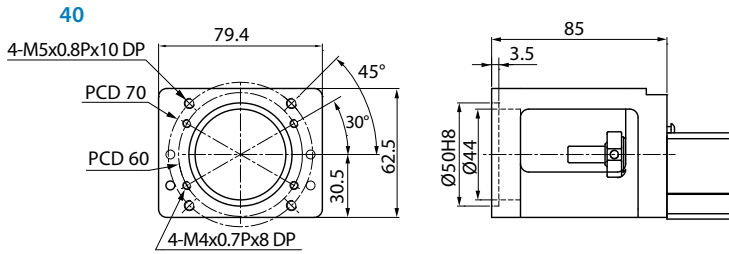
3I



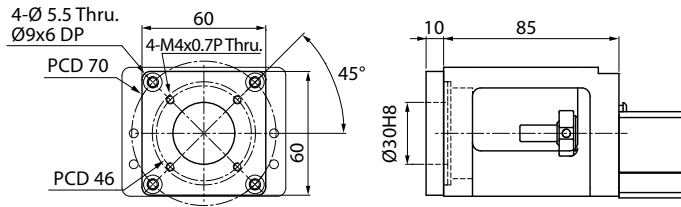
3J



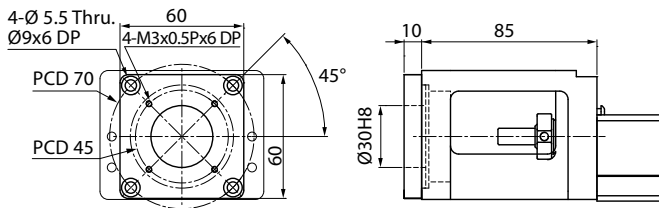
KM45



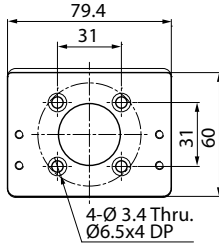
**4A**



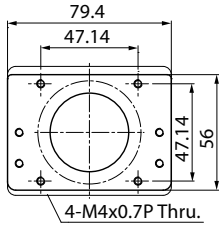
**4D**



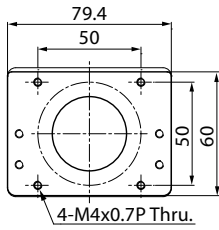
4H



4I

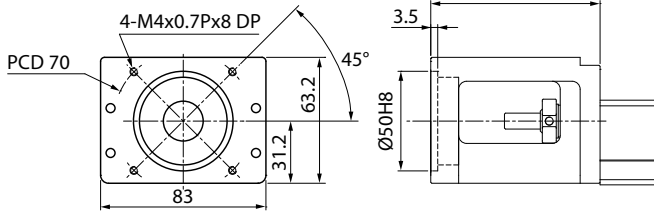


4J

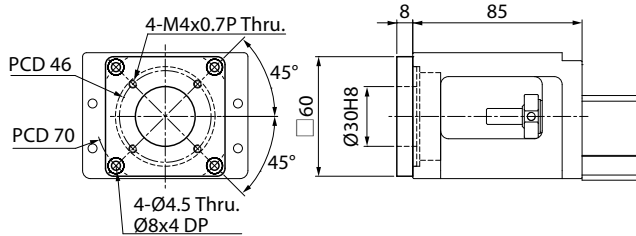


KM46

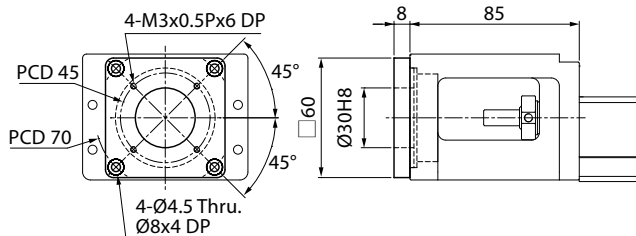
40



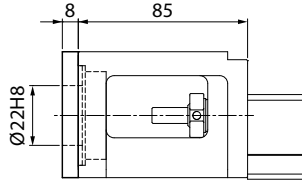
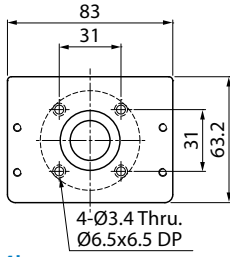
4A



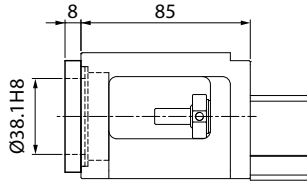
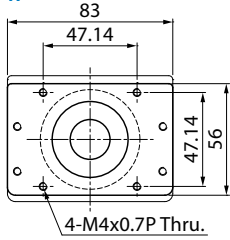
4D



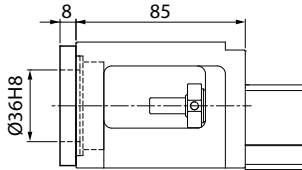
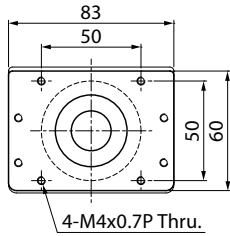
4H



4I

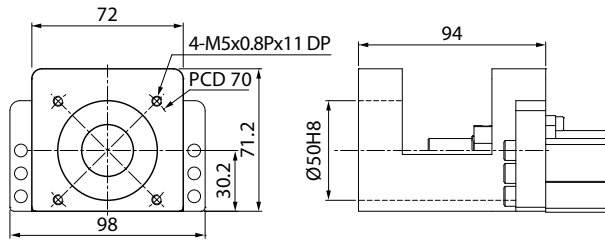


4J

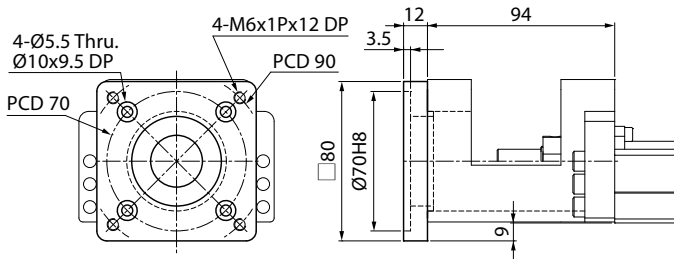




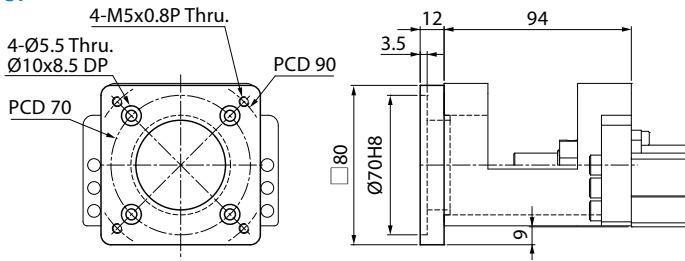
50



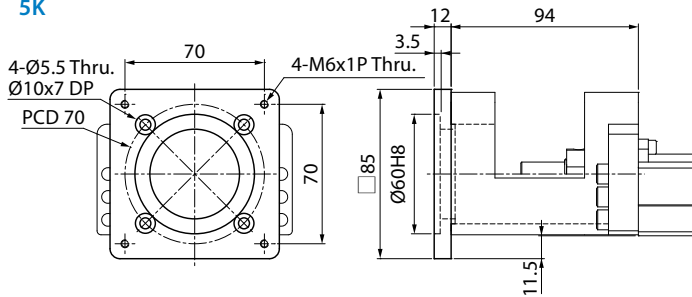
5C



5F

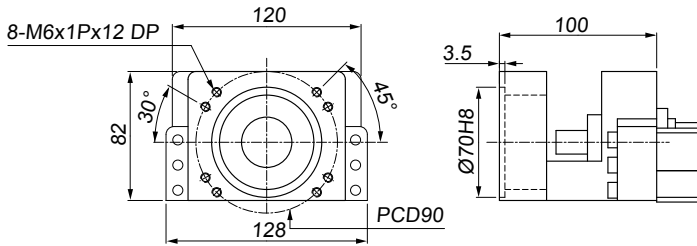


5K

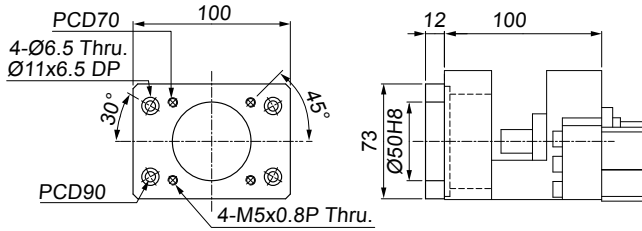


KM65

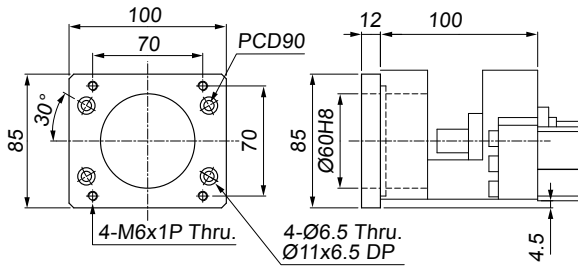
60



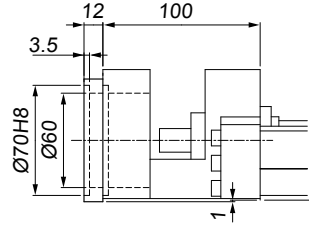
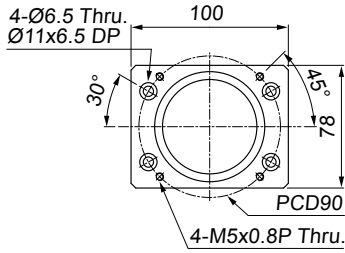
6C



6K



6F



6G

